

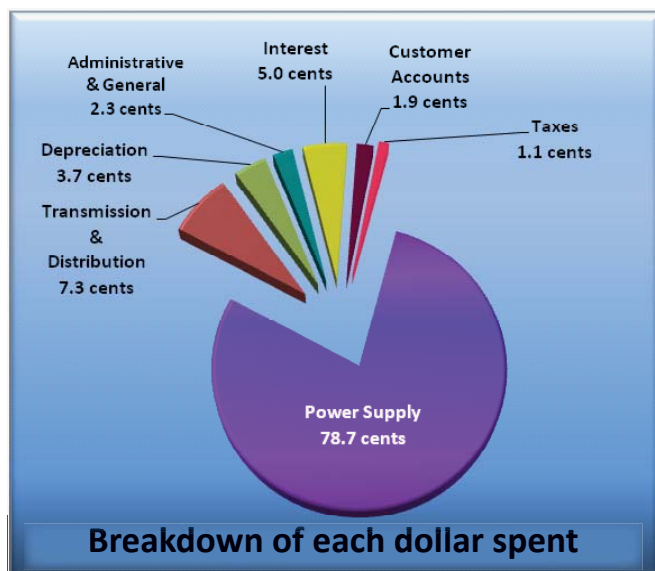
### CEC's Annual Report has the stats and facts

Citizens' 2008 Annual Report is now available online at [www.cecmo.com](http://www.cecmo.com) and in our local offices. The report includes a review of 2008 activities, financial statements, statistics and news about generation investments.

While you're at our website, click on Home Energy Saving Tools to conduct an energy audit of your home. Check out the Kids' Korner, review ways to pay your bill, ask a question or view and pay your bill. A password is required for Online Bill Pay and can be obtained by email or phone.

### Corporate Stats and Facts As of December 31, 2008

- Number of Employees - 89
- Residential Members - 24,138
- Avg. Monthly Residential kWh Usage - 1,027
- Commerical and Industrial Members - 2,449
- Total Number of Members - 26,907
- Number of Substations - 46
- Miles of Transmission Line (34.5 kV & 69 kV) - 261
- Miles of Overhead Distribution Line - 2,726
- Miles of Underground Distribution Line - 135
- Total Miles of Energized Line (transmission and distribution) - 3,122
- Total energy sold to customers - 1.3 Billion kWh
- Summer Peak (August 2008) - 220,788 kW
- Winter Peak (January 2008) - 212,525 kW



### Auto Pay winner announced

Michael Rohde of Perryville is the \$200 winner of Citizens' Auto Pay promotion. Members paying automatically from their bank accounts were entered into the drawing.

If you want to make sure your electric bill is always paid on time, check the box on your Citizens Electric bill remittance stub, complete the Auto Pay Authorization Form on the back and return it along with your next payment. Once your request has been processed, a message will print on your bill stating "DO NOT PAY - Draft will occur on (date)."

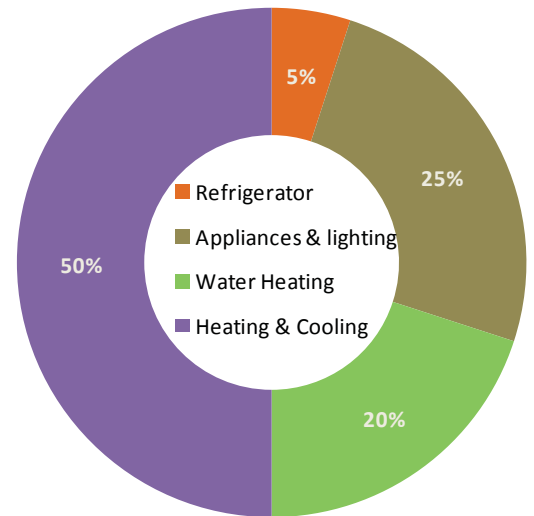
## Do you know your electric baseload?

Your home's electric baseload is the amount of electricity used during times when your electric heat or air conditioning is not operating. Determining the baseload allows you to recognize how much of your bill is weather related (for electric heating and cooling) and how much energy is being used by the other electric equipment in your home, i.e. refrigerator(s), electronics, appliances, lighting and water heating.

The lowest usage typically occurs during April or October, depending on weather. The graph located on your electric bill will show you which month had the lowest usage during the past year. To calculate your baseload, do the following:

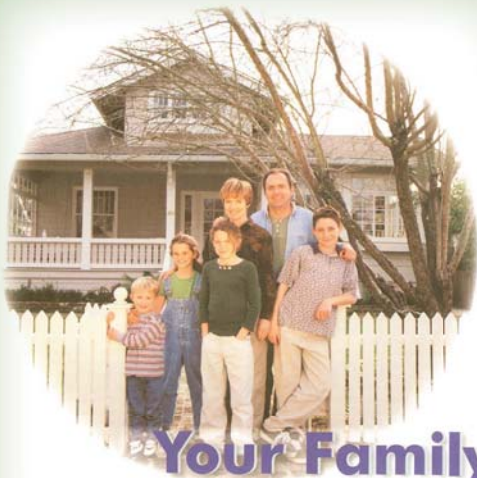
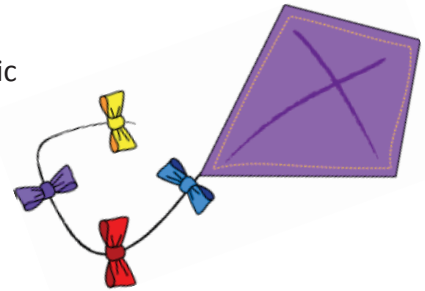
1. Determine which month you had the lowest usage per day. Figure this by dividing the total kWh for the month by the number of days in the reading period (located on your bill).
2. Take the smallest usage per day over the past year and multiply it by 30 to get your monthly baseload. Usage greater than that amount could be attributed to your furnace or air conditioner.

The chart to the right shows that typically consumers spend 50% of their energy dollars for heating and cooling.



## Stay away from power lines

Have fun flying kites this spring, but remember to stay in open fields away from electric power lines. Use dry, clean kite string – never use wire. Don't put foil or metal on your kite. If your kite catches in an electric power line or on a power pole, don't try to remove it, call CEC at 877-876-3511.



### Your Family is Unique

#### Your unique energy needs

Members are looking for ways to control their energy use. The best way to do this is by being aware of how much energy you use each month and how it is being used in your home and on your farm. This involves reading your meter to keep track of monthly energy use. By comparing your monthly usage, you may be able to identify changes in your patterns of use.

Take a few moments now to work through this guide. Then, if you still have questions about electrical use and costs, call the professionals at your electric cooperative. We're here to help!

## Your electric usage is unique to your family

Even though your neighbor may have the same floor plan, your electric consumption depends on the way you live and how you use electricity.

Factors that contribute to your uniqueness include your household size, the type of heating and cooling systems you have, the home's air leakage, how much hot water is used, the types of electrical equipment being used and the number of hours each month that they are operating.

For additional information about how your lifestyle contributes to your electric usage, request your copy of "Your Family is Unique" by emailing us at [citizens@cecmo.com](mailto:citizens@cecmo.com) or calling 1-877-876-3511.